



# Flight Plan & Site Survey

Created using **RPAS Wilco®**

Operation Name:	SOGGI
Pilot Name:	[REDACTED]
Pilot Certificate:	[REDACTED]
Flight Start:	April 16, 2023 4:54 PM
Flight End:	April 16, 2023 6:54 PM
Flight Area (Latitude):	43° 7' 38.60" N ( 43.127 )
Flight Area (Longitude):	80° 27' 11.90" W ( -80.453 )
Altitude - Radius:	Alt: 700 ft - Rad: 926.0 m ( 0.5 nm)
Airspace:	UNCONTROLLED
FIR - Contact:	CZYZ - 905-676-4509

Please ensure you received all required authorizations prior to flight.

## Disclaimer

This Site Survey was created using RPAS Wilco by AIM Robotics. The flight plan contained is intended only for RPAS flights on the date/time and location specified. The user accepts all responsibility for the accuracy and completeness of the information contained.

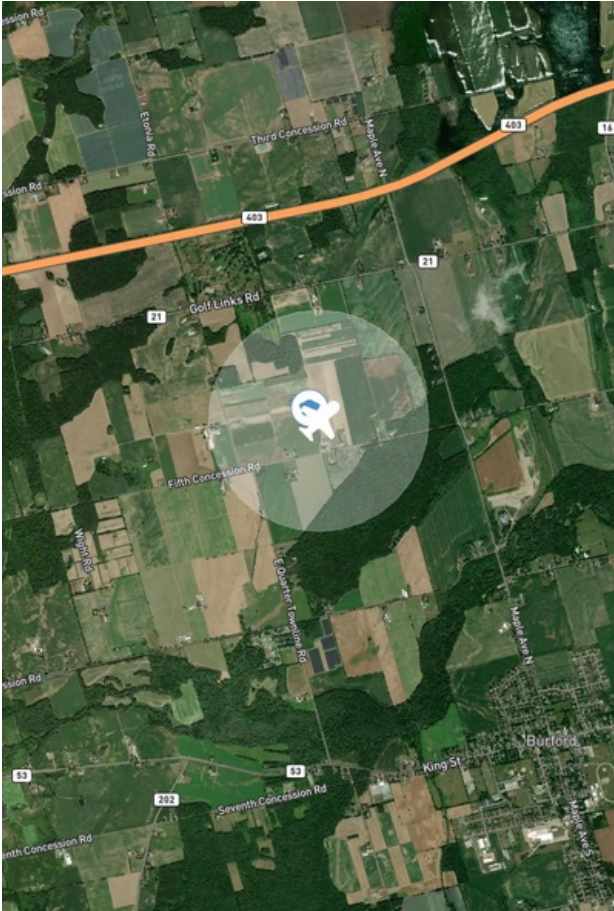
For the complete Terms & Conditions, see

<https://rpswilco.com/#/tnc>



## Included

- Site Survey
- Obstacles (if available)
- Nearby Aerodromes
- Canadian Aviation Regulations
- GFA
- Aerodrome Supplements
  - METAR & TAF (if available)
  - NOTAMS
  - CFS

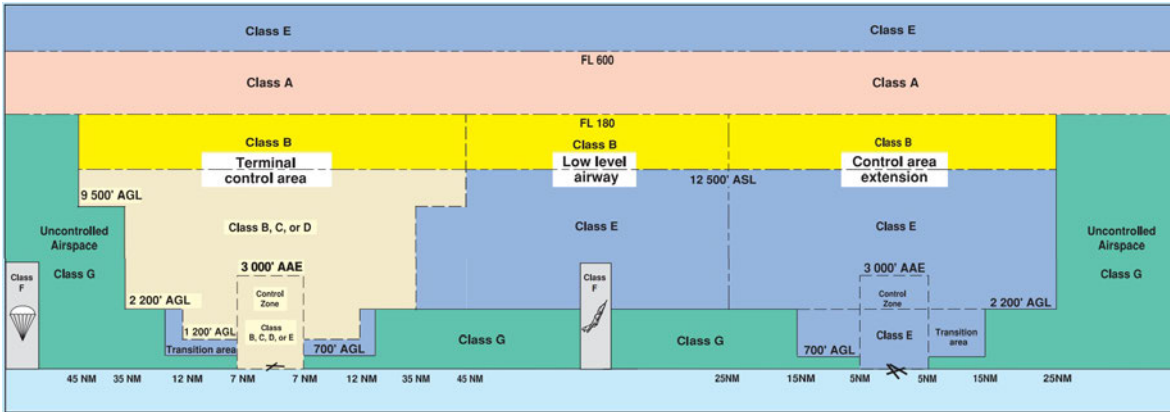
## Flight Map



## MAP Details

	Latitude	Longitude
 <b>MODEL</b>	43° 7' 38.60" N ( 43.127 )	80° 27' 11.90" W ( -80.453 )
 <b>Pilot</b>	43° 7' 42.20" N ( 43.1284 )	80° 27' 15.50" W ( -80.4543 )

## Airspace Classification



## Overlying Airspaces

Class	Name	Floor	Ceiling
B	T781 Airway	12500MSL	18000MSL
E	T781 Airway	2200AGL	12500MSL
E	T608 Airway	2200AGL	12500MSL
B	T608 Airway	12500MSL	18000MSL
B	Southern Ontario Low Level Control Area CAE	12500MSL	18000MSL
E	Southern Ontario Low Level Control Area CAE	6500MSL	12500MSL
E	Toronto XPNDR MANDTRY	6500MSL	12500MSL
E	Southern Ontario Low Level Control Area CAE	2500MSL	6500MSL

## Nearest Aerodromes & Distance from Operation

BRANTFORD (CYFD AERODROME Reg)	Lat: 43.132 Long: 80.341	9.128 KM 4.93 NM
SARGEANT PRIVATE AIRFIELD ON (CAY5 AERODROME Reg)	Lat: 43.306 Long: 80.499	20.203 KM 10.91 NM
CURRIES (RAND PRIVATE AIRFIELD) (CRE3 AERODROME Reg)	Lat: 43.065 Long: 80.7	21.198 KM 11.45 NM
PLATTSVILLE (EDWARD'S AIR BASE) (CLB2 AERODROME Reg)	Lat: 43.306 Long: 80.548	21.292 KM 11.5 NM

# Canadian Aviation Regulations

## Division III — General Operating and Flight Rules

For full listing please visit <https://laws-lois.justice.gc.ca/eng/regulations/SOR-96-433/FullText.html#s-901.27>

### Visual Line-of-sight

- **901.11 (1)** Subject to subsection (2) no pilot shall operate a remotely piloted aircraft system unless the pilot or a visual observer has the aircraft in visual line-of-sight at all times during flight.
- **(2)** A pilot may operate a remotely piloted aircraft system without the pilot or a visual observer having the aircraft in visual line-of-sight if the operation is conducted in accordance with a special flight operations certificate — RPAS issued under section 903.03.

### Procedures

- **901.23 (1)** No pilot shall operate a remotely piloted aircraft system unless the following procedures are established:
  - **(a)** normal operating procedures, including pre-flight, take-off, launch, approach, landing and recovery procedures; and
  - **(b)** emergency procedures, including with respect to
    - **(i)** a control station failure,
    - **(ii)** an equipment failure,
    - **(iii)** a failure of the remotely piloted aircraft,
    - **(iv)** a loss of the command and control link,
    - **(v)** a fly-away, and
    - **(vi)** flight termination.
- **(2)** If the manufacturer of the remotely piloted aircraft system provides instructions with respect to the topics referred to in paragraphs (1)(a) and (b), the procedures established under subsection (1) shall reflect those instructions.
- **(3)** No pilot shall conduct the take-off or launch of a remotely piloted aircraft unless the procedures referred to in subsection (1) are reviewed before the flight by, and are immediately available to, each crew member.
- **(4)** No pilot shall operate a remotely piloted aircraft system unless the operation is conducted in accordance with the procedures referred to in subsection (1).

### Site Survey

**901.27** No pilot shall operate a remotely piloted aircraft system unless, before commencing operations, they determine that the site for take-off, launch, landing or recovery is suitable for the proposed operation by conducting a site survey that takes into account the following factors:

- **(a)** the boundaries of the area of operation;
- **(b)** the type of airspace and the applicable regulatory requirements;
- **(c)** the altitudes and routes to be used on the approach to and departure from the area of operation;
- **(d)** the proximity of manned aircraft operations;
- **(e)** the proximity of aerodromes, airports and heliports;
- **(f)** the location and height of obstacles, including wires, masts, buildings, cell phone towers and wind turbines;
- **(g)** the predominant weather and environmental conditions for the area of operation; and
- **(h)** the horizontal distances from persons not involved in the operation.

### Operations at or in the Vicinity of an Aerodrome, Airport or Heliport

- **901.47 (1)** No pilot shall operate a remotely piloted aircraft at or near an aerodrome that is listed in the *Canada Flight Supplement* or the *Water Aerodrome Supplement* in a manner that could interfere with an aircraft operating in the established traffic pattern.
- **(2)** Subject to section 901.73 no pilot shall operate a remotely piloted aircraft at a distance of less than
  - **(a)** three nautical miles from the centre of an airport; and
  - **(b)** one nautical mile from the centre of a heliport.
- **(3)** No pilot shall operate a remotely piloted aircraft at a distance of less than three nautical miles from the centre of an aerodrome operated under the authority of the Minister of National Defence unless the operation is conducted in accordance with a special flight operations certificate — RPAS issued under section 903.03.

### Records

- **901.48 (1)** Every owner of a remotely piloted aircraft system shall keep the following records:
  - **(a)** a record containing the names of the pilots and other crew members who are involved in each flight and, in respect of the system, the time of each flight or series of flights and
  - **(b)** a record containing the particulars of any mandatory action and any other maintenance action, modification or repair performed on the system, including
    - **(i)** the names of the persons who performed them,
    - **(ii)** the dates they were undertaken,
    - **(iii)** in the case of a modification, the manufacturer, model and a description of the part or equipment installed to modify the system, and
    - **(iv)** if applicable any instructions provided to complete the work.
- **(2)** Every owner of a remotely piloted aircraft system shall ensure that the records referred to in subsection (1) are made available to the Minister on request and are retained for a period of
  - **(a)** in the case of the records referred to in paragraph (1)(a), 12 months after the day on which they are created; and
  - **(b)** in the case of the records referred to in paragraph (1)(b), 24 months after the day on which they are created.
- **(3)** Every owner of a remotely piloted aircraft system who transfers ownership of the system to another person shall, at the time of transfer, also deliver to that person all of the records referred to in paragraph (1)(b).

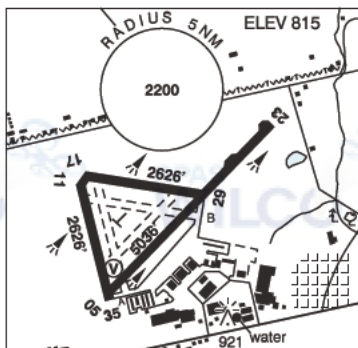
## ONTARIO

## AERODROME/FACILITY DIRECTORY

## BRANTFORD ON

CYFD

<b>REF</b>	N43 07 57 W80 20 29 4WSW 10°W UTC-5(4) Elev 815' VTA A5000 LO6 HI5 CAP
<b>OPR</b>	City 519-753-2521/1241 Reg
<b>PF</b>	B-1,2 C-3,4,5,6
<b>CUST</b>	AOE/15 888-226-7277 PN, 14-22Z† Mon-Fri exc hols
<b>FLT PLN</b>	
<b>FIC</b>	London 866-WXBRIEF (Toll free within Canada) or 866-541-4104 (Toll free within Canada & USA)
<b>SERVICES</b>	Svc avbl 13-22Z aprx O/T PN
<b>FUEL</b>	100LL, JA-1 (FSII avbl), SP
<b>OIL</b>	All
<b>S</b>	1,2,3,4,5,6
<b>RWY DATA</b>	Rwy 05(053°)/23(233°) 5036x100 asphalt Rwy 11(108°)/29(288°) 2626x100 asphalt Rwy 17(174°)/35(354°) 2626x100 asphalt
<b>RCR</b>	Opr
<b>LIGHTING</b>	05-AS(TE ME) V1, 23-(TE ME), 11-(TE LO), 29-(TE LO), 17-(TE LO), 35-(TE LO) ARCAL-122.825 type K Rwy 05-23 only. Key mike 7 times for RIL Rwy 05.
<b>COMM</b>	
<b>ATF</b>	UNICOM ltd hrs O/T tfc 122.825 5NM 3800 ASL
<b>PAL</b>	Toronto Ctr 119.7 (Hamilton) May not be receivable on ground



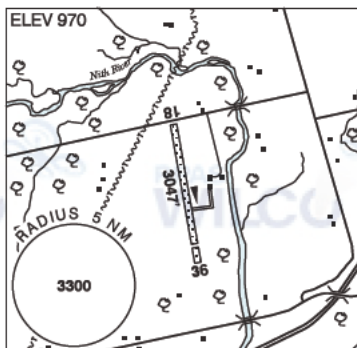
## ONTARIO

## AERODROME/FACILITY DIRECTORY

## AYR / SARGEANT PRIVATE AIRFIELD ON

CAY5

<b>REF</b>	N43 18 21 W80 29 57 2.6NW 10°W UTC-5(4) Elev 970' VTA A5000
<b>OPR</b>	Gavin Sargeant 519-748-5418/7480 Reg PPR
<b>PF</b>	B-1 C-2,3 D-4,5,6
<b>FLT PLN</b>	<b>FIC</b> London 866-WXBRIEF (Toll free within Canada) or 866-541-4104 (Toll free within Canada & USA)
<b>RWY DATA</b>	Rwy 18(180°)/36(360°) 3047x90 GRASS Thld 36 displ 324' Rwy 18 down 3%
<b>RCR</b>	Opr No win maint. Rwy may be soft early spring and late fall.
<b>COMM</b>	<b>ATF</b> tfc 123.2 5NM 4000 ASL
<b>PRO</b>	Rwy conditions must be confirmed with opr prior to use.
<b>CAUTION</b>	P-line, aprx 50 AGL, 335' N of thd of Rwy 18, marked. Trees on apch to Rwy 36.



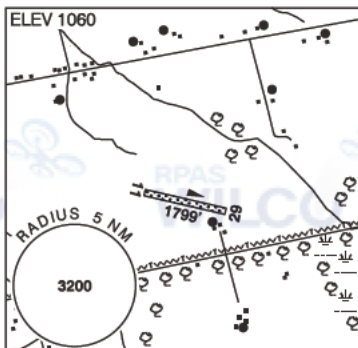
## ONTARIO

## AERODROME/FACILITY DIRECTORY

## CURRIES (RAND PRIVATE AIRFIELD) ON

CRE3

<b>REF</b>	N43 03 54 W80 42 00 Adj ESE 9°W UTC-5(4) Elev 1060' VTA A5000
<b>OPR</b>	George Rand 519-424-2175 519-617-3707 Reg PPR
<b>PF</b>	B-1 C-2,3
<b>FLT PLN</b>	
<b>FIC</b>	London 866-WXBRIEF (Toll free within Canada) or 866-541-4104 (Toll free within Canada & USA)
<b>RWY DATA</b>	Rwy 11(112°)/29(292°) 1799x60 GRASS
<b>RCR</b>	Opr No win maint. Rwy may be soft in early spring and late fall.
<b>PRO</b>	Rwy conditions must be confirmed with opr prior to use.
<b>CAUTION</b>	Multiple lgt'd groups of wind turbines to 1572 ASL (480 AGL) aprx 1NM N of A/D, to 1543 ASL (480 AGL) aprx 1.7NM ENE of A/D, to 1572 ASL (480 AGL) aprx 0.6NM to aprx 2.0NM E of A/D.



## ONTARIO

## AERODROME/FACILITY DIRECTORY

## PLATTSVILLE (EDWARD'S AIR BASE) ON

CLB2

<b>REF</b>	N43 18 21 W80 32 55 3E 10°W UTC-5(4) Elev 980' VTA A5000
<b>OPR</b>	Edward Lubitz 519-684-7686 Reg
<b>PF</b>	B-1 C-2,4,5
<b>FLT PLN</b>	
<b>FIC</b>	London 866-WXBRIEF (Toll free within Canada) or 866-541-4104 (Toll free within Canada & USA)
<b>RWY DATA</b>	Rwy 07(066°)/25(246°) 1980x75 GRASS
<b>RCR</b>	Opr No win maint
<b>COMM</b>	
<b>ATF</b>	tfc 123.2 5NM 4000 ASL
<b>PRO</b>	Std circuit hgt 2000 ASL. Ultralight circuit hgt 1500 ASL.
<b>CAUTION</b>	Gnd drops off 20' at Thld 25. Trees 25 AGL 75' SE of Thld 25. Trees 25 AGL 225' NW Thld 25.

